

Food Waste Quality Specification

YES PLEASE

ALL ITEMS SHOULD BE FREE OF PACKAGING



FRUIT, PEEL & FRUIT STONES



UNWANTED SANDWICHES



UNWANTED READY MEALS



UNWANTED TAKE OUT



UNWANTED MEAT & FISH



UNWANTED CHEESE



TEA BAGS & COFFEE GRINDS



UNWANTED CAKE

NO THANK YOU



LARGE BONES



GARDEN WASTE



FOOD PACKAGING



CUTLERY & CROCKERY



GLASS



COMPOSTABLE PACKAGING



VAPES & BATTERIES



EXCREMENT

Examples of acceptable materials:

- Raw and cooked food including meat and fish
- Food slops and leftovers
- Vegetable peelings
- Fruit cores, peelings and stones
- Egg shells
- Teabags and coffee grinds
- Food processing residues e.g. from bakeries and breweries

If placed in a compost bin, all tea bags can be composted. However, if the tea bags are in a plastic bag, it is best to snip them open and empty the contents into the compost bin, disposing of the bag in the residual waste.



Common examples of unacceptable materials:

- Blood
- Large bones, animal carcasses and butchery waste
- Glass
- Loose packaging (no food in it)
- Cutlery and crockery - including **compostable** items
- Green/garden waste
- General waste
- Wood
- Metal
- Soil
- Acrylic Items
- Chemicals
- Oils
- Paint
- Fibre Glass Products
- Textiles

Compostable packaging should not go in your food waste bin as it needs industrial composting, which most food waste collections don't provide.

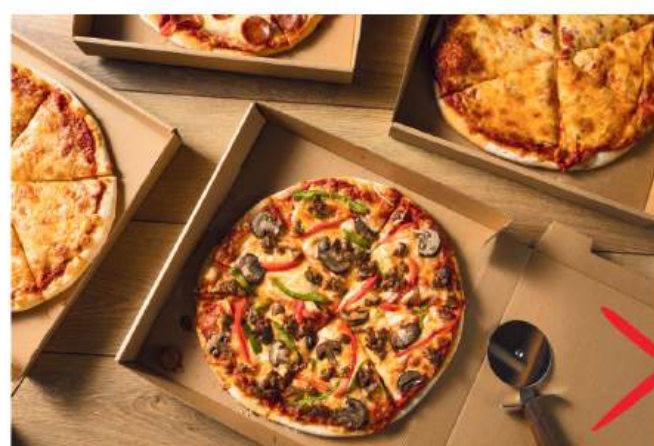
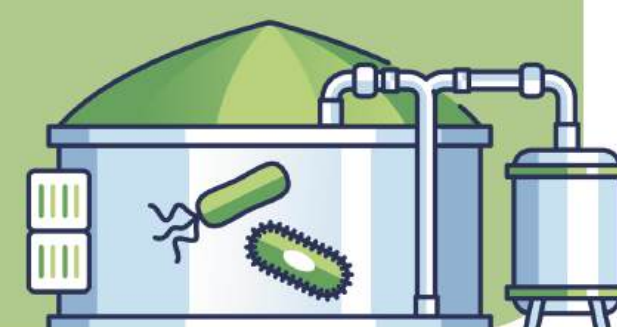
Dispose of it in residual waste unless otherwise specified.



ANAEROBIC DIGESTION

FOOD WASTE WILL BE TREATED USING ANAEROBIC DIGESTION, A NATURAL PROCESS WHERE MICROORGANISMS BREAK DOWN THE WASTE IN THE ABSENCE OF OXYGEN. THIS GENERATES BIOGAS, WHICH CAN BE USED FOR ENERGY, AND NUTRIENT-RICH MATERIAL, WHICH CAN BE USED AS A FERTILIZER.

PLEASE NOTE: THE ABOVE LIST IS NOT EXHAUSTIVE – MOST FOOD CAN BE PROCESSED THIS WAY.



Food loads mixed with unacceptable materials will be rejected:

All loads will be inspected prior upon collection or tipping. Any loads found to be contaminated will be deemed as unacceptable and rejected. The customer will be informed and given evidence showing reason for the rejection.

All material must be consigned in accordance with the Duty of Care Regulations and the Environmental Protection Act and must be accompanied with the correct paperwork.